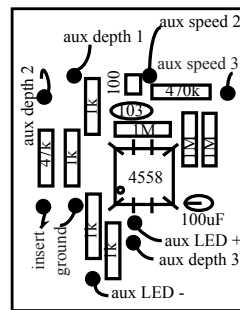
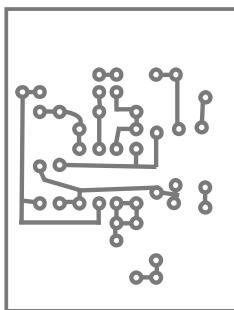
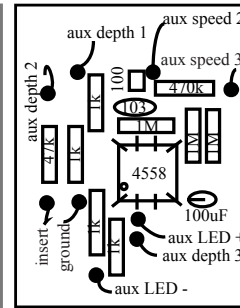
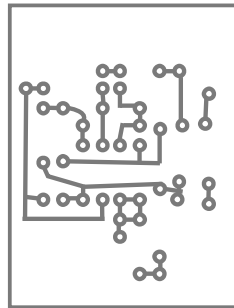
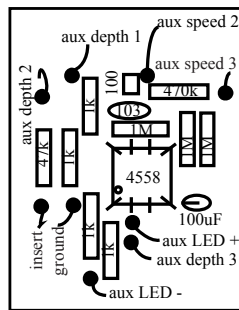
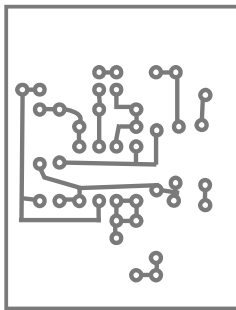
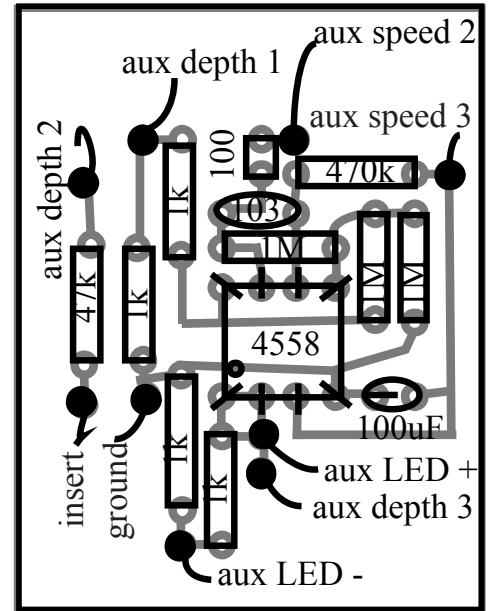


1) Find the 100k resistor on the main board that connects to (main) Depth 2. Replace it with a 47k resistor.

2) Run a wire from "Insert" on the mod board to the other end of the above-mentioned 47k resistor (NOT the end that connects to [main] Depth 2, but rather the end that connects to the IC)



Parts list:

- 1 □ 100
- 4 □ 1k
- 2 □ 47k
- 1 □ 470k
- 3 □ 1M
- 1 □ 0.01uf (103)
- 1 □ 100uF
- 1 □ LED
- 1 □ LED clip
- 2 □ 100k pot (depth,speed)
- 2 □ knob covers
- 1 □ 8pin IC socket
- 1 □ 4558 IC